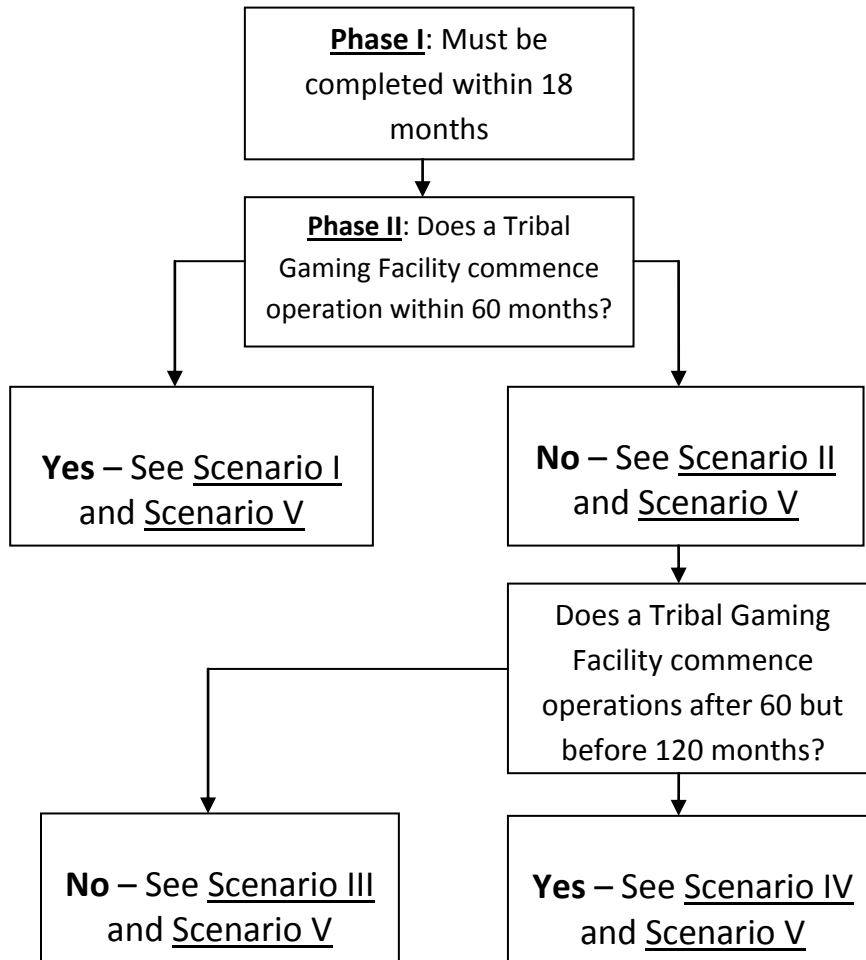


**CHISHOLM CREEK CASINO & RESORT**  
**Summary of Minimum Requirements for Phases I and II\***



**Phase I** – Regardless of whether a “Tribal Gaming Facility” commences operations, within 18 months 72,000 ft<sup>2</sup> Enterprise; 1,300 machines; 40 table games; 200-seat restaurant; 100-room hotel.

**Phase II, Scenario I** – Within 144 months a total of 1,700 machines; a total of 50 table games; three additional restaurants; 50 additional hotel rooms; 10,000 ft<sup>2</sup> on-site convention space.

**Phase II, Scenario II** – Within 84 months 200 additional machines; additional 250-seat buffet restaurant; additional 30-seat café; additional 125-set entertainment venue.

**Phase II, Scenario III** – Within 144 months have a total of 2,000 machines; a total of 50 table games; two additional restaurants; a total of 150 hotel rooms; a total of 17,000 ft<sup>2</sup> convention space; a total of 30,000 ft<sup>2</sup> entertainment space.

**Phase II, Scenario IV** – Same as Scenario II **plus** Scenario I, above.

**Phase II, Scenario V** – If gaming commences at the Tribal Gaming Facility but subsequently ceases, Manager shall timely complete the applicable Phase II Scenario(s), except that if the cessation occurs within 24 months of a Scenario deadline, the deadline will be extended to 24 months from the date of cessation.

\*See “Exhibit C” for details. All dates calculated from contractual “Commencement Date” of Lottery Gaming Facility.